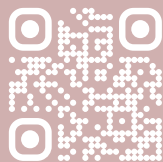


MAGLashes GmbH
Krumme Str. 63
10627 Berlin
Deutschland

www.maglashes.de
hallo@maglashes.de



www.maglashes.com
www.maglashes.ch

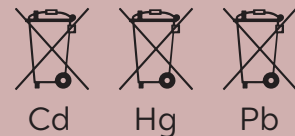


since 2017

Information on battery disposal in accordance with the Battery Act and Battery Ordinance:

This LED cosmetic mirror contains an integrated lithium-ion battery that must not be disposed of with household waste. Old batteries contain valuable raw materials that can be reused. They are marked as containing harmful substances and must be disposed of specifically. The battery is marked with the symbol of a crossed-out garbage can and may contain heavy metals such as lead, mercury or cadmium. Used batteries can be returned free of charge to a municipal collection point or to retailers. Returns to retailers are limited to quantities usual for end users as well as used batteries that the distributor carries or has carried in its range as new batteries. Proper disposal of batteries protects the environment and health and conserves resources.

Note: Before disposing of the device, batteries that are not permanently installed should be removed and disposed of separately if this is technically possible.



DECLARATION OF CONFORMITY (CE):
We, MAGLashes GmbH, hereby declare that the LED cosmetic mirror complies with the basic requirements and other relevant regulations of the EU directives. A full declaration of conformity can be provided upon request.



CUSTOMER SERVICE:
For further information or if you have any problems, please contact our customer service hallo@maglashes.de



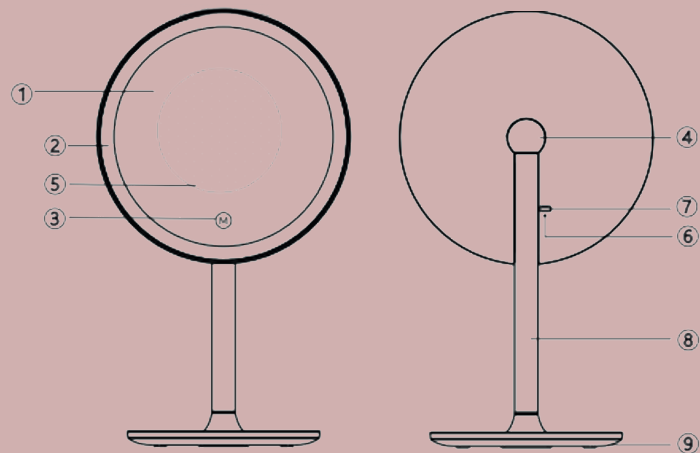
MAG *Lashes*®

LED-Mirror

Instructions & information

SAFETY INSTRUCTIONS:

- Do not immerse in water or clean under running water.
- Do not drop or subject to strong impacts.
- If the USB cable or connector is damaged, replace it immediately.



SCOPE OF DELIVERY:

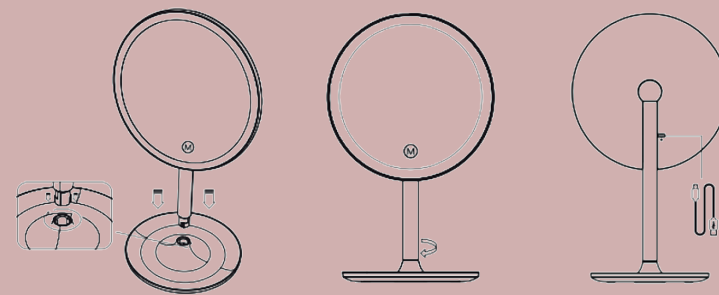
1. Magnetic fields
2. LED light
3. Color change switch (LED)
4. 360 degree rotation
5. More magnetic areas
6. Charge level indicator
7. USB port
8. Stand

PRODUCT SPECIFICATIONS:

- Model: LED cosmetic mirror
- Housing: ABS plastic and glass
- Light sources: 60 LEDs with three color temperatures
 - o White (6500K)
 - o Warm white (3500K)
 - o Natural white
- Battery: 2000mAh, 7.4Wh, 3.7V
- Rated power: 3.6W
- Power supply: DC 5.0V, 2A
- Color rendering index: 90
- Mirror frame diameter: 20cm
- Mirror diameter: 17.5cm
- Weight: approx. 650 grams

INSTALLATION INSTRUCTIONS

1. Insert the holder into the screw thread of the mirror stand
2. Screw the bracket into the stand.
3. Charge the battery with the USB cable.



ERROR DIAGNOSIS:

- Mirror does not turn on: Check whether the USB cable is connected correctly and whether the mirror is charging. Please check whether the mirror is switched on (power button on the back of the mirror to ON).
- LEDs not working correctly: Make sure the mirror is fully charged. The different lights can be selected using the M button. If in doubt, contact customer service.
- The mirror turns off automatically: To save energy, the mirror turns off automatically after

30 minutes. Then just turn it back on.

- Mirror not charging: Check that you are using the correct cable, that the cable is working, and that the cable's power source is working.

DISPOSAL INSTRUCTIONS:

Disposal instructions according to WEEE:

The LED cosmetic mirror falls under the category of electrical and electronic devices. Disposal with household waste is not permitted. This product is marked with the crossed-out wheelie bin symbol, which indicates that at the end of its life, the product must be disposed of separately from unsorted municipal waste. Please contact your local collection point or the retailer where the product was purchased for further information on how to dispose of, reuse and recycle this product in an environmentally friendly manner. By disposing of this product correctly, you will help avoid possible negative environmental impacts and health risks.

